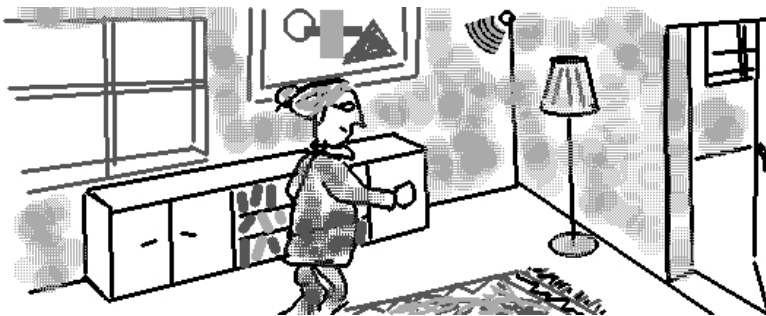


### Context

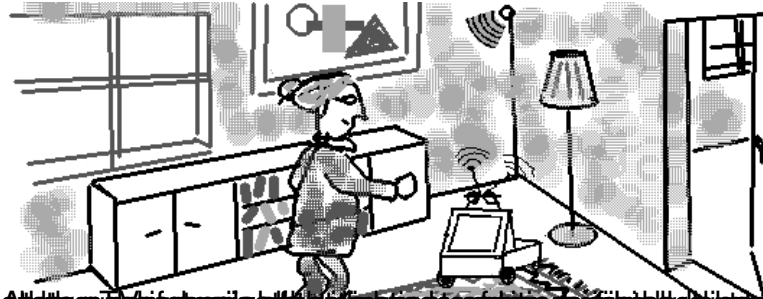
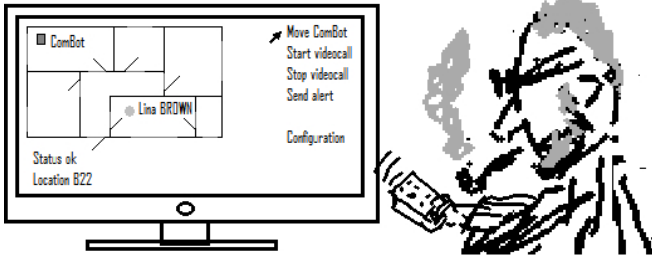
This use case illustrates some future assistance services for elderly persons, [search](#) supported by indoor localization technologies and context-aware applications. The indicated features and services are at the core of Ambient Assisted Living in general, [order](#)

and will therefore, after following a user-centered design approach, serve as source of generic and AAL-specific requirements for the Future Internet. Private and public spaces like home and supermarkets will serve as AAL platforms and can thus provide added value services. The use case highlights the commonalities between the different spaces and the seamless service provision expected from the Future Internet based society when moving from one AAL space to another.

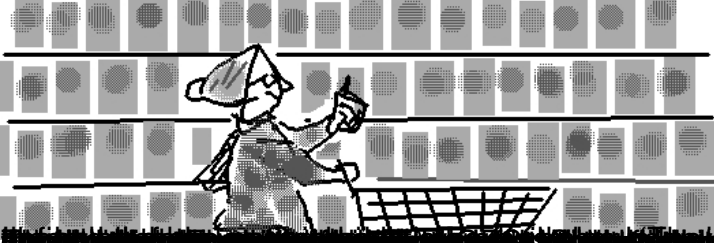
### Scenario



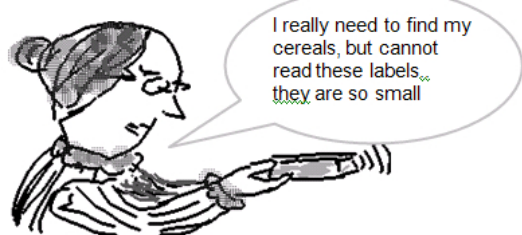
Lina is a 78-year old person, who lives alone but she has adult children who care about her. While living away from Lina, the children are always aware of her whereabouts and they are confident that the AAL system installed at her home would alert them in time in case of problems.



Although the robot is not yet fully autonomous, it can be used to help people with visual impairments to move around the room



Such a device can be used to help people with visual impairments to scan products in a grocery store



Such a device can be used to help people with visual impairments to find products in a grocery store



Such a device can be used to help people with visual impairments to find products in a grocery store